

## Philips Evnia 5000 27M2N5500/00 LED display 68.6 cm (27") 2560 x 1440 pixels Quad HD LCD Black

**Brand :** Philips

**Product family:** Evnia

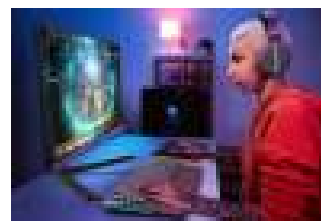
**Product code:** 27M2N5500/00

**Product name :**  
27M2N5500/00

Fast IPS Gaming monitor 27M2N5500 Quad HD gaming monitor

Philips Evnia 5000 27M2N5500/00 LED display 68.6 cm (27") 2560 x 1440 pixels Quad HD LCD Black:

This monitor is equipped for any game. With its 0.5ms Smart MBR, 180Hz refresh rate, and Quad HD resolution, it is made to bring gamers an all-around and visually pleasing gaming experience. Philips Evnia 5000 27M2N5500/00. Display diagonal: 68.6 cm (27"), Display resolution: 2560 x 1440 pixels, HD type: Quad HD, Display technology: LCD, Response time: 1 ms, Native aspect ratio: 16:9, Viewing angle, horizontal: 178°, Viewing angle, vertical: 178°. VESA mounting, Height adjustment. Product colour: Black



| Display                               |                      | Ergonomics                        |   |
|---------------------------------------|----------------------|-----------------------------------|---|
| Display diagonal *                    | 68.6 cm (27")        | Panel mounting interface          | 100 x 100 mm  |
| Display resolution *                  | 2560 x 1440 pixels   | Cable lock slot *                 | ✓   |
| HD type *                             | Quad HD              | Cable lock slot type              | Kensington  |
| Native aspect ratio *                 | 16:9                 | Height adjustment *               | ✓   |
| Display technology *                  | LCD                  | Height adjustment                 | 13 cm   |
| Panel type *                          | Nano IPS             | Pivot                             | ✓   |
| LED backlight                         | ✓                    | Pivot angle                       | -90 - 90°   |
| Backlight type                        | W-LED                | Swivelling                        | ✓   |
| Touchscreen *                         | ✗                    | Swivel angle range                | -45 - 45°   |
| Display brightness (typical)          | 350 cd/m²            | Tilt adjustment                   | ✓   |
| Response time *                       | 1 ms                 | Tilt angle range                  | -5 - 20°  |
| Anti-glare screen                     | ✓                    | On Screen Display (OSD)           | ✓   |
| Screen shape *                        | Flat                 | On Screen Display (OSD) languages | Simplified Chinese, Traditional Chinese, Czech, German, Dutch, English, Spanish, Finnish, French, Greek, Hungarian, Italian, Japanese, Korean, Polish, Portuguese, Russian, Swedish, Turkish, Ukrainian |
| Contrast ratio (typical) *            | 1200:1               |                                   |   |
| Dynamic contrast ratio marketing name | Mega Infinity DCR    |                                   |   |
| Maximum refresh rate *                | 170 Hz               | Number of OSD languages           | 21  |
| Viewing angle, horizontal             | 178°                 | Plug and Play                     | ✓   |
| Viewing angle, vertical               | 178°                 | LED indicators                    | Operation, Stand-by   |
| Display number of colours *           | 1.07 billion colours | <b>Power</b>                      |   |
| Response time (fast)                  | 0.5 ms               | Power consumption (typical) *     | 29.8 W  |
| Pixel pitch                           | 0.2331 x 0.2331 mm   | Power consumption (standby) *     | 0.5 W   |
| Pixel density                         | 108.79 ppi           | Power consumption (off)           | 0.3 W   |
| Horizontal scan range                 | 30 - 280 kHz         | AC input voltage                  | 100 - 240 V   |
| Vertical scan range                   | 48 - 180 Hz          | AC input frequency                | 50/60 Hz  |
| Viewable size, horizontal             | 59.7 cm              | Power supply type                 | External  |
| Viewable size, vertical               | 33.6 cm              | <b>Operational conditions</b>     |   |
| Digital horizontal frequency          | 30 - 230 kHz         | Operating temperature (T-T)       | 0 - 40 °C   |
| Digital vertical frequency            | 48 - 144 Hz          | Storage temperature (T-T)         | -20 - 60 °C   |
| Display diagonal (metric)             | 68.5 cm              | Operating relative humidity (H-H) | 20 - 80%  |
| High Dynamic Range (HDR) supported    | ✓                    | Operating altitude                | 0 - 3658 m  |

| Display                             |                | Operational conditions            |  |
|-------------------------------------|----------------|-----------------------------------|--|
| High Dynamic Range (HDR) technology | DisplayHDR 400 | Non-operating altitude            | 3658 - 12192 m   |
| DDC/CI                              | ✓              | Weight & dimensions               |  |
| Haze rate                           | 25%            | Width (with stand)                | 614 mm   |
| Surface hardness                    | 3H             | Depth (with stand)                | 261 mm   |
| Colour depth                        | 8 bit          | Height (with stand)               | 519 mm   |
| Colour gamut standard               | DCI-P3         | Weight (with stand)               | 5.68 kg  |
| Colour gamut                        | 93.5%          | Width (without stand)             | 614 mm   |
| sRGB coverage (typical)             | 125%           | Depth (without stand)             | 60 mm  |
| Adobe RGB coverage                  | 89%            | Height (without stand)            | 368 mm   |
| Display sRGB                        | ✓              | Weight (without stand)            | 3.28 kg  |
| Performance                         |                | Packaging data                    |  |
| NVIDIA G-SYNC *                     | ✓              | Package width                     | 730 mm   |
| AMD FreeSync *                      | ✓              | Package depth                     | 188 mm   |
| Fast charging                       | ✓              | Package height                    | 478 mm   |
| Component video sync                | Separate sync  | Package weight                    | 9.53 kg  |
| Flicker-free technology             | ✓              | Packaging content                 |  |
| Low Blue Light technology           | ✓              | Stand included                    | ✓  |
| Multimedia                          |                | Cables included                   | AC, DisplayPort, HDMI  |
| Built-in speaker(s) *               | ✗              | Sustainability                    |  |
| Built-in camera *                   | ✗              | Sustainability compliance         | ✓  |
| Design                              |                | Doesn't contain                   | Mercury, PVC/BFR   |
| Market positioning *                | Gaming         | Other features                    |  |
| Product colour *                    | Black          | Low input lag                     | ✓  |
| Ports & interfaces                  |                | Compatible operating systems      | Mac OS X Windows 11/10   |
| HDMI *                              | ✓              | Exterior finish type              | Textured   |
| HDMI ports quantity                 | 2              | Picture enhancement               | SmartImage game  |
| HDMI version                        | 2.0            | Recyclable packaging material     | 100%   |
| DisplayPorts quantity               | 1              | Regulatory Approvals              | CB, CCC, CECP, CEL, CE Mark, TUV-BAUART, EAC, MEPS, PSB, BSMI, EMF, FCC, ICES-003, TUV/ISO9241-307, UKCA |
| DisplayPort version                 | 1.4            |                                   |  |
| Headphone out *                     | ✓              | Heavy metals free                 | Hg (mercury)   |
| HDCP                                | ✓              | Delta E                           | 2  |
| HDCP version                        | 1.4/2.2        | Adaptive synchronisation          | ✓  |
| Ergonomics                          |                | EasyRead mode                     | ✓  |
| VESA mounting *                     | ✓              | LowBlue mode                      | ✓  |
|                                     |                | Philips SmartUniformity           | 93 - 105%  |
|                                     |                | Compliance certificates           | RoHS   |
|                                     |                | Mean time between failures (MTBF) | 50000 h  |



8712581809645

Disclaimer. The information published here (the "Information") is based on sources that can be considered reliable, typically the manufacturer, but this Information is provided "AS IS" and without guarantee of correctness or completeness. The Information is only indicative and can be changed at any time without notification. No rights can be based on the Information. Suppliers or aggregators of this Information do not accept any liability with regard to the content of (web)pages and other documents, including its Information. The publisher of the Information can not be held liable for the content of 3rd party websites that are linking this Information or are linked to from this Information. You as the User of the Information are solely responsible for the choice and usage of this Information. You are not entitled to transfer, copy or otherwise multiply or distribute the Information. You are obliged to follow the directions of the copyright owner(s) with regard to the use of the Information. Exclusively Dutch law is applicable. With regard to price and stock data on the site, the publisher followed a number of starting points, which are not necessarily relevant for your private or business circumstances. Therefore, the price and stock data are only indicative and are subject to changes. You are personally responsible for the way you use and apply this information. As a user of the Information or sites or documents in which this Information is included, you will adhere to standard fair use including avoidance of spamming, ripping, intellectual-property violations, privacy violations, and any other illegal activity.

Publication date: 19-OCT-2024. Prints or copies of Information are only valid on the printed Publication date