



MSI MAG Infinite 11TC-1431MYS Intel® Core™ i7 i7-11700F 32 Go DDR4-SDRAM 2 To HDD+SSD NVIDIA GeForce RTX 3060 Windows 10 Home Bureau PC Noir

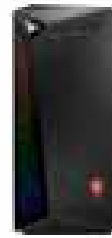
Marque : MSI

Famille de produit: MAG Infinite

Code produit: MAG INFINITE 11TC-1431MYS

Nom du produit : 11TC-1431MYS

MSI MAG Infinite 11TC-1431MYS. Fréquence du processeur: 2,5 GHz, Famille de processeur: Intel® Core™ i7, Modèle de processeur: i7-11700F. Mémoire interne: 32 Go, Type de mémoire interne: DDR4-SDRAM, Fréquence de la mémoire: 3200 MHz. Capacité totale de stockage: 2 To, Supports de stockage: HDD+SSD. Modèle d'adaptateur graphique discret: NVIDIA GeForce RTX 3060. Système d'exploitation installé: Windows 10 Home, Architecture du système d'exploitation: 64-bit. Alimentation d'énergie: 500 W. Type de châssis: Bureau. Type de produit: PC. Couleur du produit: Noir



Processor		Ports & interfaces	
Processor manufacturer *	Intel	VGA (D-Sub) ports quantity	1
Processor family *	Intel® Core™ i7	HDMI ports quantity *	1
Processor generation	11th gen Intel® Core™ i7	HDMI version	2.0b
Processor model *	i7-11700F	DisplayPorts quantity	1
Processor cores	8	DisplayPort version	1.4
Processor boost frequency	4.9 GHz	PS/2 ports quantity	1
Processor frequency *	2.5 GHz	Ethernet LAN (RJ-45) ports	1
Processor cache	16 MB	Microphone in	✓
Number of processors installed	1	Headphone outputs	1
Memory		Line-out	✓
Internal memory *	32 GB	Line-in	✓
Maximum internal memory *	64 GB	Design	
Internal memory type	DDR4-SDRAM	Chassis type *	Desktop
Memory layout (slots x size)	2 x 16 GB	Volume	42 L
Memory slots	2x DIMM	Placement supported	Vertical
Memory clock speed	3200 MHz	Number of 3.5" bays	2
Storage		Number of 2.5" bays	1
Total storage capacity *	2 TB	Product colour *	Black
Storage media *	HDD+SSD	Performance	
Optical drive type *	✗	Market positioning	Gaming
Total HDDs capacity	1 TB	Motherboard chipset	Intel H510
Number of HDDs installed	1	Audio chip	Realtek ALC897
HDD capacity	1 TB	Audio output channels	7.1 channels
HDD interface	SATA	Product type *	PC
Total SSDs capacity	1 TB	Software	
Number of SSDs installed	1	Operating system installed *	Windows 10 Home
SSD capacity	1 TB	Operating system architecture	64-bit
SSD interface	NVMe	Processor special features	
NVMe	✓	Intel 64	✓
SSD form factor	M.2	Enhanced Intel SpeedStep Technology	✓
Card reader integrated	✗		

Graphics		Processor special features	
Discrete graphics card *	✓	Embedded options available	✗
Discrete GPU manufacturer	NVIDIA	Intel VT-x with Extended Page Tables (EPT)	✓
On-board graphics card *	✗	Idle States	✓
Discrete graphics card model *	NVIDIA GeForce RTX 3060	Intel Stable Image Platform Program (SIPP)	✗
Discrete graphics card memory	12 GB	Intel Trusted Execution Technology	✗
Discrete graphics memory type	GDDR6	Execute Disable Bit	✓
On-board graphics card model *	Not available	Intel Software Guard Extensions (Intel SGX)	✗
Network		CPU configuration (max)	1
Ethernet LAN *	✓	Intel Virtualization Technology for Directed I/O (VT-d)	✓
Ethernet LAN data rates	10,100,1000 Mbit/s	Intel Virtualization Technology (VT-x)	✓
Cabling technology	10/100/1000Base-T(X)	Power	
LAN controller	Intel WGI219V	Power supply *	500 W
Wi-Fi *	✓	80 PLUS certification	80 PLUS Bronze
Top Wi-Fi standard	Wi-Fi 5 (802.11ac)	Weight & dimensions	
Wi-Fi standards	802.11a, 802.11b, 802.11g, Wi-Fi 4 (802.11n), Wi-Fi 5 (802.11ac)	Width *	210 mm
WLAN controller manufacturer	Intel	Depth *	450 mm
WLAN controller model	Intel Wi-Fi 6E AX210	Height *	488 mm
Antenna type	2x2	Weight *	10 kg
Bluetooth	✓	Package weight	12 kg
Bluetooth version	5.2	Packaging content	
Ports & interfaces		Display included *	✗
USB 2.0 ports quantity *	5	Logistics data	
USB 3.2 Gen 1 (3.1 Gen 1) Type-A ports quantity *	3	Harmonized System (HS) code	84715000
USB 3.2 Gen 1 (3.1 Gen 1) Type-C ports quantity *	1		



4719072888848

Disclaimer. The information published here (the "Information") is based on sources that can be considered reliable, typically the manufacturer, but this Information is provided "AS IS" and without guarantee of correctness or completeness. The Information is only indicative and can be changed at any time without notification. No rights can be based on the Information. Suppliers or aggregators of this Information do not accept any liability with regard to the content of (web)pages and other documents, including its Information. The publisher of the Information can not be held liable for the content of 3rd party websites that are linking this Information or are linked to from this Information. You as the User of the Information are solely responsible for the choice and usage of this Information. You are not entitled to transfer, copy or otherwise multiply or distribute the Information. You are obliged to follow the directions of the copyright owner(s) with regard to the use of the Information. Exclusively Dutch law is applicable. With regard to price and stock data on the site, the publisher followed a number of starting points, which are not necessarily relevant for your private or business circumstances. Therefore, the price and stock data are only indicative and are subject to changes. You are personally responsible for the way you use and apply this information. As a user of the Information or sites or documents in which this Information is included, you will adhere to standard fair use including avoidance of spamming, ripping, intellectual-property violations, privacy violations, and any other illegal activity.

Publication date: 18-JAN-2025. Prints or copies of Information are only valid on the printed Publication date