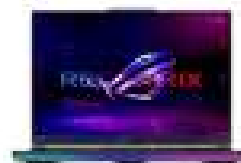


# ASUS ROG Strix SCAR 16 G634JY-NM001W Intel® Core™ i9 i9-13980HX Laptop 40,6 cm (16") WQXGA 32 GB DDR5-SDRAM 2 TB SSD NVIDIA GeForce RTX 4090 Wi-Fi 6E (802.11ax) Windows 11 Home Zwart

**Merk :** ASUS

**Productfamilie:** ROG

**Artikelcode:** 90NR0D91-  
M00280



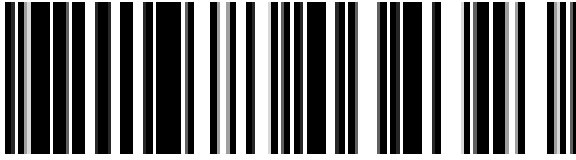
**Productnaam :** G634JY-  
NM001W

ASUS ROG Strix SCAR 16 G634JY-NM001W. Producttype: Laptop, Form factor: Clamshell.  
Processorfamilie: Intel® Core™ i9, Processormodel: i9-13980HX, Frequentie van processor: 2,2 GHz.  
Beeldscherm diagonaal: 40,6 cm (16"), HD type: WQXGA, Resolutie: 2560 x 1600 Pixels. Intern  
geheugen: 32 GB, Intern geheugentype: DDR5-SDRAM. Totale opslagcapaciteit: 2 TB, Opslagmedia: SSD.  
On-board graphics adapter model: Intel® UHD Graphics. Inclusief besturingssysteem: Windows 11  
Home. Kleur van het product: Zwart



Design		Audio	
Kleurnaam	Off Black	Audiosysteem	Dolby Atmos
Producttype *	Laptop	Aantal ingebouwde luidsprekers	4
Kleur van het product *	Zwart	Ingebouwde microfoon	✓
Vormfactor *	Clamshell	Camera	
Materiaal behuizing	Aluminium	Camera voorzijde	✓
Markt positionering	Gamen	Voorcamera HD-type	HD
Introductie jaar	2023	Netwerk	
Beeldscherm		Wifi-standaard *	Wi-Fi 6E (802.11ax)
Beeldscherm diagonaal *	40,6 cm (16")	Wi-Fi-standaarden	Wi-Fi 6E (802.11ax)
Resolutie *	2560 x 1600 Pixels	Mobiele netwerkverbinding *	✗
Touchscreen *	✗	Soort antenne	2x2
HD type	WQXGA	Ethernet LAN	✓
Soort paneel	Mini LED	Ethernet LAN, data-overdrachtsnelheden	10,100,1000,2500 Mbit/s
Oorspronkelijke beeldverhouding	16:10	Bluetooth	✓
Antireflectiescherm	✓	Bluetooth-versie	5.2
RGB-kleurruimte	DCI-P3	Poorten & interfaces	
Kleurbereik	100 procent	Aantal poorten USB 3.2 Gen 2 (3.1 Gen 2) Type A	2
Beeldschermreactietijd rise/fall	3 ms	Aantal poorten USB 3.2 Gen 2 (3.1 Gen 2) Type C	1
Maximale refresh snelheid	240 Hz	Aantal Ethernet LAN (RJ-45)-poorten	1
Typische contrastverhouding	100000:1	Aantal HDMI-poorten *	1
HDR-ondersteuning	✓	HDMI versie	2.1
High Dynamic Range (HDR)-technologie	Dolby Vision	Aantal Thunderbolt 4-poorten	1
Processor		Intel® Thunderbolt 4	✓
Processorfabrikant *	Intel	Combo koptelefoon/microfoon port	✓
Processorfamilie *	Intel® Core™ i9	Charging port type	DC-in ingang
Processorgeneratie	Intel® 13de generatie Core™ i9		
Processormodel *	i9-13980HX		

<b>Processor</b>		<b>Poorten &amp; interfaces</b>	
Aantal processorkernen	24	USB Type-C DisplayPort alternatieve modus	✓
Maximale turbofrequentie van processor	5,6 GHz	USB Power Delivery	✓
Frequentie van processor *	2,2 GHz	<b>Toetsenbord</b>	
Processor cache	36 MB	Aanwijsapparaat	NumberPad
<b>Geheugen</b>		Toetsenbordindeling	AZERTY
Intern geheugen *	32 GB	Taal toetsenbord	Belgisch
Intern geheugentype	DDR5-SDRAM	Numeriek toetsenblok *	✗
Kloksnelheid geheugen	4800 MHz	Keyboard met achtergrondverlichting	✓
Geheugen form factor	SO-DIMM	Kleur achtergrondverlichting van toetsenbord	RGB
Geheugenlayout	2 x 16 GB	Zone met toetsenbordverlichting	Programmeerbare toetsen RGB
Geheugenslots	2x SO-DIMM	Eiland-stijl keyboard	✓
Maximum intern geheugen *	64 GB	<b>Software</b>	
<b>Opslagmedia</b>		Architectuur besturingssysteem	64-bit
Totale opslagcapaciteit *	2 TB	Inclusief besturingssysteem *	Windows 11 Home
Opslagmedia *	SSD	<b>Accu/Batterij</b>	
Totale capaciteit SSD's	2 TB	Energie-opslagtechnologie accu/batterij	Lithium-Ion (Li-Ion)
Aantal geïnstalleerde SSD's	2	Aantal cellen in de batterij	4
Solid State Drive (SSD) capaciteit	1 TB	Accu/Batterij capaciteit *	90 Wh
Solid State Drive (SSD) interfaces	PCI Express 4.0	<b>Energie</b>	
NVMe	✓	AC-adapter, vermogen	330 W
SSD-vormfactor	M.2	AC-adapterfrequentie	50 - 60 Hz
Soort optische drive *	✗	AC-adapter ingangsspanning	100 - 240 V
Geïntegreerde geheugenkaartlezer	✗	AC-adapter, uitgangsstroom	16,5 A
<b>Grafisch</b>		AC-adapter, uitgangsspanning	20 V
Fabrikant van aparte grafische adapter	NVIDIA	<b>Beveiliging</b>	
Discreet grafische adapter model *	NVIDIA GeForce RTX 4090	Trusted Platform Module (TPM)	✓
Discreet grafische adaptergeheugen	16 GB	Wachtwoordbeveiliging	✓
Specifiek grafisch geheugentype	GDDR6	Password bescherming	BIOS, Gebruiker
Ingebouwde grafische adapter *	✓	<b>Gewicht en omvang</b>	
Interne-GPU-fabrikant	Intel	Breedte	354 mm
Aparte grafische adapter *	✓	Diepte	264 mm
On-board graphics adapter model *	Intel® UHD Graphics	Hoogte (voorzijde)	2,26 cm
NVIDIA G-SYNC	✓	Hoogte (achterzijde)	3,04 cm
		Gewicht *	2,5 kg



4711387034323

Disclaimer. The information published here (the "Information") is based on sources that can be considered reliable, typically the manufacturer, but this Information is provided "AS IS" and without guarantee of correctness or completeness. The Information is only indicative and can be changed at any time without notification. No rights can be based on the Information. Suppliers or aggregators of this Information do not accept any liability with regard to the content of (web)pages and other documents, including its Information. The publisher of the Information can not be held liable for the content of 3rd party websites that are linking this Information or are linked to from this Information. You as the User of the Information are solely responsible for the choice and usage of this Information. You are not entitled to transfer, copy or otherwise multiply or distribute the Information. You are obliged to follow the directions of the copyright owner(s) with regard to the use of the Information. Exclusively Dutch law is applicable. With regard to price and stock data on the site, the publisher followed a number of starting points, which are not necessarily relevant for your private or business circumstances. Therefore, the price and stock data are only indicative and are subject to changes. You are personally responsible for the way you use and apply this information. As a user of the Information or sites or documents in which this Information is included, you will adhere to standard fair use including avoidance of spamming, ripping, intellectual-property violations, privacy violations, and any other illegal activity.

Publication date: 21-OCT-2024. Prints or copies of Information are only valid on the printed Publication date