

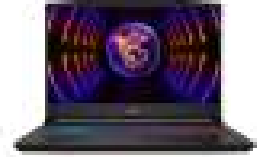
# MSI Pulse 15 B13VFK-1061BE Intel® Core™ i9 i9-13900H Laptop 39,6 cm (15.6") Full HD 16 GB DDR5-SDRAM 1 TB SSD NVIDIA GeForce RTX 4060 Wi-Fi 6 (802.11ax) Windows 11 Home Grijs

**Merk :** MSI

**Productfamilie:** Pulse

**Artikelcode:** PULSE 15  
B13VFK-1061BE

**Productnaam :** Pulse 15  
B13VFK-1061BE



- Windows 11 Home
  - Intel Core i9-13900H (24MB Cache)
  - 39.6 cm (15.6") Full HD 1920 x 1080, NVIDIA GeForce RTX 4060 (8GB GDDR6)
  - 16GB (5200MHz) DDR5-SDRAM (2 x 8) & 1000GB SSD
- Intel Core i9-13900H (24MB Cache), 16GB DDR5-SDRAM, 1000GB SSD, 39.6 cm (15.6") Full HD 1920 x 1080, Intel Iris Xe Graphics, NVIDIA GeForce RTX 4060 (8GB GDDR6), WLAN, Webcam, Windows 11 Home

MSI Pulse 15 B13VFK-1061BE. Producttype: Laptop, Form factor: Clamshell. Processorfamilie: Intel® Core™ i9, Processormodel: i9-13900H. Beeldschermdiagonaal: 39,6 cm (15.6"), HD type: Full HD, Resolutie: 1920 x 1080 Pixels. Intern geheugen: 16 GB, Intern geheugentype: DDR5-SDRAM. Totale opslagcapaciteit: 1 TB, Opslagmedia: SSD. On-board graphics adapter model: Intel Iris Xe Graphics, Discreet grafische adapter model: NVIDIA GeForce RTX 4060. Inclusief besturingssysteem: Windows 11 Home. Kleur van het product: Grijs



Design		Audio	
Kleurnaam	Titanium Gray	Audiosysteem	Nahimic 3
Producttype *	Laptop	Aantal ingebouwde luidsprekers	2
Kleur van het product *	Grijs	Merk luidsprekers	Nahimic
Vormfactor *	Clamshell	Vermogen luidsprekers	2 W
Markt positionering	Gamen	Camera	
Beeldscherm		Camera voorzijde	✓
Beeldschermdiagonaal *	39,6 cm (15.6")	Voorcamera HD-type	HD
Resolutie *	1920 x 1080 Pixels	Video capturing speed	30 fps
Touchscreen *	✗	Netwerk	
HD type	Full HD	Wifi-standaard *	Wi-Fi 6 (802.11ax)
Oorspronkelijke beeldverhouding	16:9	Wi-Fi-standaarden	Wi-Fi 6 (802.11ax)
Helderheid	250 cd/m <sup>2</sup>	Mobiele netwerkverbinding *	✗
RGB-kleurruimte	sRGB	WLAN-controller-model	Intel Wi-Fi 6 AX201
Kleurbereik	100 procent	Fabrikant van de WLAN-controller	Intel
Maximale refresh snelheid	360 Hz	Ethernet LAN	✓
Processor		Ethernet LAN, data-overdrachtsnelheden	10,100,1000 Mbit/s
Processorfabrikant *	Intel	Bluetooth	✓
Processorfamilie *	Intel® Core™ i9	Bluetooth-versie	5.2
Processorgeneratie	Intel® 13de generatie Core™ i9	Poorten & interfaces	
Processormodel *	i9-13900H	Aantal USB 2.0-poorten *	1
Aantal processorkernen	14	Aantal poorten USB 3.2 Gen 1 (3.1 Gen 1) Type A *	2
Maximale turbofrequentie van processor	5,4 GHz	Aantal poortenUSB 3.2 Gen 1 (3.1 Gen 1) Type C *	1
Efficiënte kernboostfrequentie	4,1 GHz	Aantal Ethernet LAN (RJ-45)-poorten	1
Processor cache	24 MB	Aantal HDMI-poorten *	1
Processor cache type	Smart Cache	Combo koptelefoon/microfoon port	✓
Configureerbare TDP-down	35 W		
Processor basisvermogen	45 W		

<b>Processor</b>		<b>Poorten &amp; interfaces</b>	
Maximaal turbovermogen	115 W	USB Type-C DisplayPort alternatieve modus ✓	
<b>Geheugen</b>		<b>Prestatie</b>	
Intern geheugen *	16 GB	Chipset moederbord	Intel HM770
Intern geheugentype	DDR5-SDRAM	<b>Toetsenbord</b>	
Kloksnelheid geheugen	5200 MHz	Aanwijsapparaat	Touchpad
Geheugen form factor	SO-DIMM	Numeriek toetsenblok *	✓
Geheugenlayout	2 x 8 GB	Keyboard met achtergrondverlichting	✓
Maximum intern geheugen *	64 GB	Kleur achtergrondverlichting van toetsenbord	RGB
<b>Opslagmedia</b>		Zone met toetsenbordverlichting	4-zone RGB
Totale opslagcapaciteit *	1 TB	<b>Software</b>	
Opslagmedia *	SSD	Inclusief besturingssysteem *	Windows 11 Home
Totale capaciteit SSD's	1 TB	MSI System Control Manager MSI BurnRecovery MSI Remind Manager MSI Battery Calibration MSI Help Desk Norton Internet Security (trail 60days) Norton Studio (Metro) (permanent free) Nvidia GeForce Experience Microsoft Office 2016 (trial 30 days, 1 year per purchase) True Color 2.0 Nahimic 3 Dragon Center 2.0	
Aantal geïnstalleerde SSD's	1	Meegeleverde software	
Solid State Drive (SSD) capaciteit	1 TB	<b>Processor speciale functies</b>	
Solid State Drive (SSD) interfaces	PCI Express 4.0	CPU configuratie (max)	1
NVMe	✓	<b>Accu/Batterij</b>	
Soort optische drive *	✗	Aantal cellen in de batterij	4
<b>Grafisch</b>		Accu/Batterij capaciteit *	90 Wh
Fabrikant van aparte grafische adapter	NVIDIA	<b>Energie</b>	
Discreet grafische adapter model *	NVIDIA GeForce RTX 4060	AC-adapter, vermogen	240 W
Discreet grafische adaptergeheugen	8 GB	<b>Gewicht en omvang</b>	
Specifiek grafisch geheugentype	GDDR6	Breedte	359 mm
Ingebouwde grafische adapter *	✓	Diepte	259 mm
Interne-GPU-fabrikant	Intel	Hoogte	26,9 mm
Aparte grafische adapter *	✓	Gewicht *	2,3 kg
Familie ingebouwde grafische adapter	Intel Iris Xe Graphics		
On-board graphics adapter model *	Intel Iris Xe Graphics		



4711377102834

Disclaimer. The information published here (the "Information") is based on sources that can be considered reliable, typically the manufacturer, but this Information is provided "AS IS" and without guarantee of correctness or completeness. The Information is only indicative and can be changed at any time without notification. No rights can be based on the Information. Suppliers or aggregators of this Information do not accept any liability with regard to the content of (web)pages and other documents, including its Information. The publisher of the Information can not be held liable for the content of 3rd party websites that are linking this Information or are linked to from this Information. You as the User of the Information are solely responsible for the choice and usage of this Information. You are not entitled to transfer, copy or otherwise multiply or distribute the Information. You are obliged to follow the directions of the copyright owner(s) with regard to the use of the Information. Exclusively Dutch law is applicable. With regard to price and stock data on the site, the publisher followed a number of starting points, which are not necessarily relevant for your private or business circumstances. Therefore, the price and stock data are only indicative and are subject to changes. You are personally responsible for the way you use and apply this information. As a user of the Information or sites or documents in which this Information is included, you will adhere to standard fair use including avoidance of spamming, ripping, intellectual-property violations, privacy violations, and any other illegal activity.

Publication date: 19-OCT-2024. Prints or copies of Information are only valid on the printed Publication date